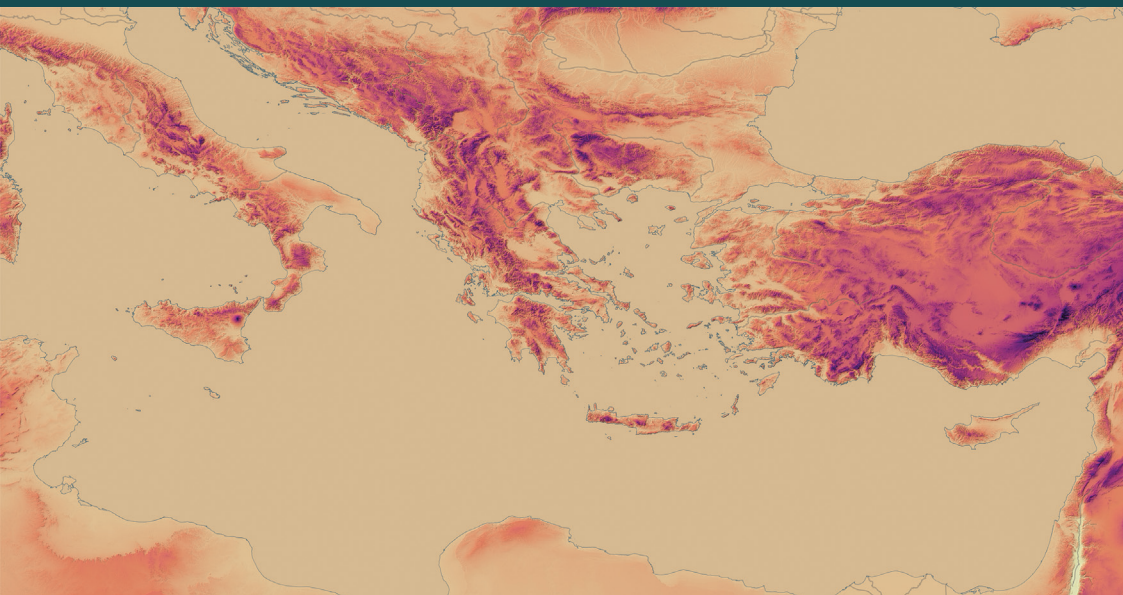




NATIONAL HELLENIC RESEARCH FOUNDATION
INSTITUTE OF HISTORICAL RESEARCH



LABORATORY OF DIGITAL HISTORICAL CARTOGRAPHY

Scientific Infrastructures

The Institute of Historical Research of the National Hellenic Research Foundation (IHR/NHRF) possesses high expertise and specialization in the documentation and production of digital applications. Part of IHR's activities includes providing specialized services to the research community, universities, cultural institutions, and businesses.

Laboratory of Digital Historical Cartography

The Laboratory of Digital Historical Cartography at the Institute of Historical Research of the National Hellenic Research Foundation focuses on digital cartographic research and documentation of historical, archaeological, and topographical data using Geographic Information Systems (GIS). Its goal is to create original digital thematic maps and other digital applications that present historical information in a well-documented, comprehensible, and aesthetically pleasing manner, covering the entire spectrum of Greek history from antiquity to the modern era.

Activities-Services

1. Creation of Original Digital Maps:

- **Chronological Mapping:** Depiction of the evolution of historical events such as wars, population movements, and administrative changes.
- **Spatial Analysis Applications:** Distribution of settlements and population on specially designed topographical maps.
- **Network Analysis:** Mapping the interconnections of people, ideas, economic and political phenomena, as well as goods and products over time and space.

2. **Consulting Services:** Documentation and design of cartographic materials for museums and institutions.

3. **Educational Material:** Creation of digital maps for educational purposes at all levels of education.

4. **Digital Resources for the Public:** Development of digital cartographic resources for the public, including chronological and thematic categories in a "Digital Atlas of Greek History".

5. **Training Students and Young Professionals:** Training in digital cartography and research.

6. **Digital Cartographic Narration:** Visualization of historical narratives in a cartographic environment.

7. **Documentation of Cultural Data:** Processing spatial and cultural data for use in culture, tourism, and creative industries applications.

The above services aim to support the academic community, researchers, professionals, and organizations in the cultural and creative sector, as well as the wider public, with original and high-documentation-quality cartographic material.

Research Team

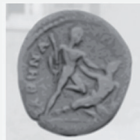
Vyron Antoniadis - Scientific Supervisor
Senior Researcher IHR/NHRF

Dimitris Dimitropoulos
Research Director IHR/NHRF

Michael Festas
Postdoctoral researcher IHR/NHRF

Christos Chrysanthopoulos
Special scientific - technical Staff IHR/NHRF

Related projects implemented at the Institute of Historical Research of the National Hellenic Research Foundation:



Roman Attica Project

<https://romanattica.eu/el/>



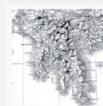
Τα οικονομικά του Αγώνα –
Φορολογία και Κράτος

<https://www.finances1821.eu/>



Οι οικισμοί της Τριπόλης,
17ος-21ος αιώνας.

<https://www.settlements-tripolis.gr/>



Το οικιστικό δίκτυο της
Πελοποννήσου στα χρόνια
της Επανάστασης

<https://www.settlements-peloponnese1821.eu/>

LABORATORY OF DIGITAL HISTORICAL CARTOGRAPHY

Vasileos Constantinou 48, 116 35 ATHENS

Email: digitalcartography@eie.gr

Τηλ.: 210 72 73 573, 210 72 73 689